

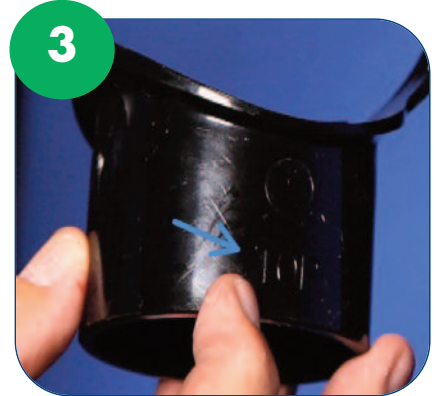
## Step by Step Installation Guide - STRAP ON BOSS (SP319)



- 1**
- ✓ Cut a 54mm hole into the soil pipe.



- 2**
- ✓ Solvent weld around the hole and the flange of the Strap on Boss.



- 3**
- ✓ The Strap on Boss has a built in fall of 2½ degrees.
  - ✓ The word 'top' is embossed on the fitting to show the correct way up.



- 4**
- ✓ Push fittings together to secure bond.



- 5**
- ✓ Squeeze the clips at the back together to secure the Strap on Boss to the soil pipe.



- 6 FOR PUSH-FIT APPLICATIONS**
- ✓ For Push-Fit connections 32/40/50mm to pipe, use rubber boss adaptors SP10/11/12.



**7 FOR SOLVENT WELD APPLICATIONS**



- ✓ Solvent cement fittings together to secure bond.
- ✓ For Solvent Weld connections, use solvent weld adaptors SP20/21/22.

For further information, please visit our website: [www.floplast.co.uk](http://www.floplast.co.uk)